



530GPM INFLATABLE BOAT

ExoKeel technology compatible



Versatile, stable, and highly manoeuvrable, and designed for conducting multiple operations. The 530 GPM features an inflatable deep V-shaped keel and hull shaping for offshore and inshore use. Suitable for insertion/extraction, raiding and search and rescue.

BENEFITS:

- » Design and construction benchmarked against SOLAS rescue boat standards
- » Outstanding stability and manoeuvrability
- » ExoKeel reinforces the boat profile, improving the ride performance in heavy sea states efficiently delivering the team safely to their target, ready for their mission
- » Customizable accessories such as single point inflation, rapid deploy tow, cargo net
- » Available in 3 different floor options
- » Lightweight design, optimized for carrying with several handles

“
*Lightweight,
superior build
with intelligent
inflation system*
”



530GPM INFLATABLE BOAT

TECHNICAL DATA

Length overall	5,300m
Width overall	2,135m
Length inside	3,795m
Width inside	1,035m
Weight hull	95kg
Buoyancy chambers (Stk)	5
Max. Payload	1720kg
Crew limit (Stk)	12
Max. Motorization (KW) / (PS)	51,5KW / 70PS
Max. Weight Motorization (single or twin)	140kg
Buoyancy	2,42m ³
Boat inner surface	3,58m ²
Tube diameter	55,0cm
Tube diameter bug	51,0cm
Fabric	Hypalon 1670 dtex

BOATS AVAILABLE IN THE FOLLOWING SIZES					
	380GPM	420GPM	470GPM	530GPM	580GPM
Length	3,800m	4,200m	4,700m	5,300m	5,800m
Width	1,670m	1,800m	1,955m	2,135m	2,500m

EXO KEEL AVAILABLE

Increases ride comfort to passengers for insertion, load carriage and gives added protection to a potentially vulnerable and essential component of the boat

STV Valve

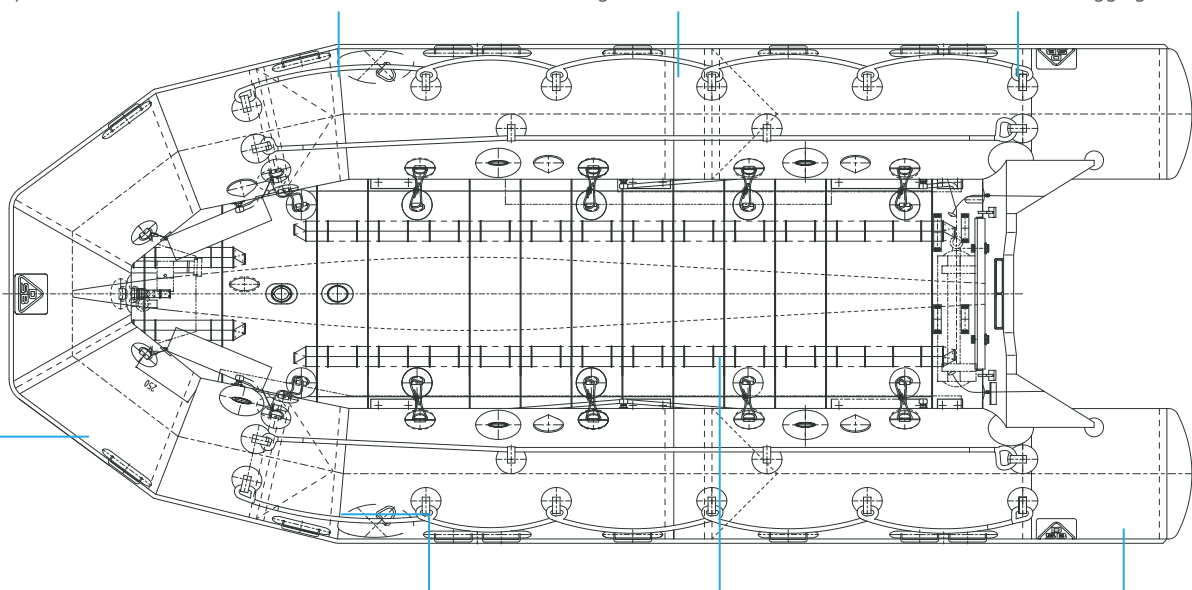
Switchable transfer valves, for use with rapid inflation and deflation for subsurface caching

Single Point Inflation

Single/Twin depending on task. Can inflate 5.3 M boat in 1 minute

Single/Twin Soft Handles

Rounded for better grip and push flat to the buoyancy to avoid snagging hazard



Military C7 Inflation Valve

Flush to the buoyancy and interchangeable with a simple socket tool, no need to cut out and replace damaged valves, unique to us

Grip Patches

To assist personnel with raiding, boarding and secure seating of pax

Multiple Floor Options

As per customer requirements

Military C7 Inflation Valves

Positioned to minimise residual air during recovery of sub-surface assets

GET IN TOUCH

Email: sales.esch@survitecgroup.com / www.beaufort.group

DSB

Angerweg 5, D-37632, Germany
© Copyright DSB 2025

beaufort