



380GPM INFLATABLE BOAT

Lightweight, superior build with intelligent inflation system



Vital for quick deployment, reconnaissance, and rescues. The 380GPM is a lightweight, small pack size boat. Improving user mobility and helping ensure you are agile and ready for multiple scenarios.

BENEFITS:

- » Design and construction benchmarked against SOLAS rescue boat standards
- » Heavy duty construction, manufactured from UV resistant, robust hypalon fabric
- » Fully adaptable for a variety of applications including fast rescue, infiltration and extraction, and covert missions
- » Customisable accessories such as reinforcements, handles and ropes
- » Available with low noise battery powered whisper engine

“
*Lightweight,
superior build
with intelligent
inflation system*
”



beaufort

380GPM INFLATABLE BOAT

TECHNICAL DATA

Length overall	3,800m
Width overall	1,670m
Length inside	2,695m
Width inside	0,760m
Weight hull	51kg
Weight wood floor	41kg
Weight roll-up floor	32kg
Weight aluminium floor	39kg
Weight inflatable floor	9kg
Buoyancy chambers (Stk)	3
Max. Payload	830kg
Crew limit (Stk)	6
Max. Motorization (KW) / (PS)	29,4KW / 40PS
Max. Weight Motorization (single or twin)	115kg
Buoyancy	1,22m ³
Boat inner surface	1,82m ²
Tube diameter	55,0cm
Tube diameter bug	42,0cm
Fabric	Hypalon 1670 dtex

BOAT SIZE RANGE

BOATS AVAILABLE IN THE FOLLOWING SIZES					
	380GPM	420GPM	470GPM	530GPM	580GPM
Length	3,800m	4,200m	4,700m	5,300m	5,800m
Width	1,670m	1,800m	1,955m	2,135m	2,500m

STV Valve

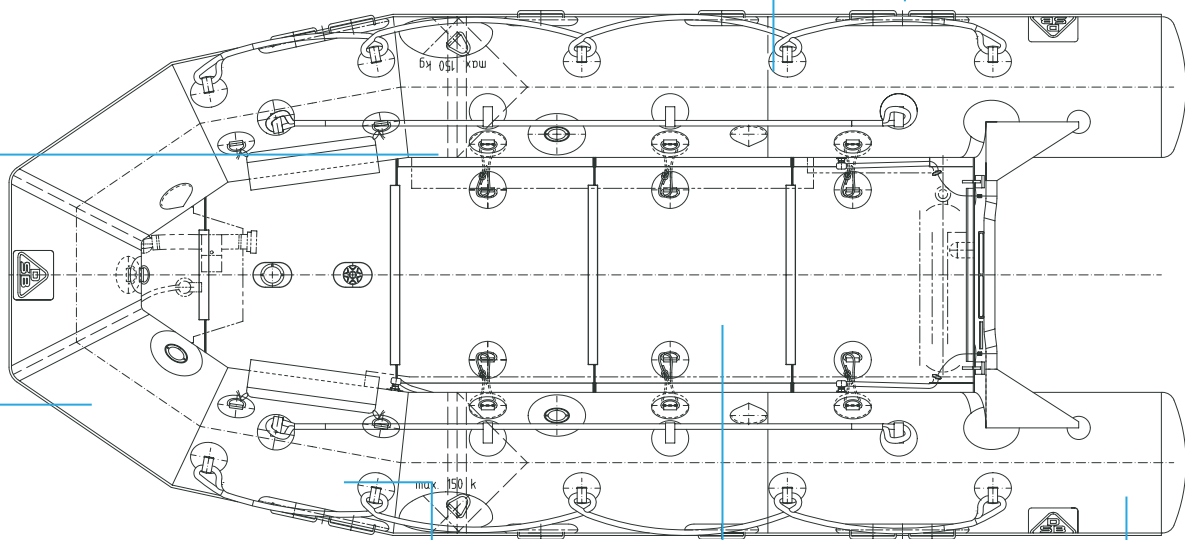
Switchable transfer valves, for use with rapid inflation and deflation for subsurface caching

Single Point Inflation

Single/Twin depending on task. Can inflate 5.3 M boat in 1 minute

Single/Twin Soft Handles

Rounded for better grip and push flat to the buoyancy to avoid snagging hazard



Military C7 Inflation Valve

Flush to the buoyancy and interchangeable with a simple socket tool, no need to cut out and replace damaged valves, unique to us

Grip Patches

To assist personnel with raiding, boarding and secure seating of pax

Multiple Floor Options

As per customer requirements

Military C7 Inflation Valves

Positioned to minimise residual air during recovery of sub-surface assets

GET IN TOUCH

Email: sales.esch@survitecgroup.com / www.beaufort.group

DSB

Angerweg 5, D-37632, Germany
© Copyright DSB 2025

beaufort